



1 North Elevation  
A301 Scale: 1:100



2 West Elevation  
A301 Scale: 1:100

**MATERIAL PALETTE**

- 1 VERTICAL BOARD AND BATTEN CEMENT PANEL SIDING DARK GREY
- 2 VERTICAL PLANK CEMENT PANEL SIDING LIGHT GREY
- 3 PERFORATED SOFFIT, IN DARK GREY
- 4 PERFORATED SOFFIT WOOD-LOOK PLANK, IN DOUGLAS FIR
- 5 WOOD-LOOK PLANK CLADDING, IN DOUGLAS FIR
- 6 FIBRE CEMENT PLANK LAP SIDING, WOOD GRAIN FINISH, IN DARK GREY
- 7 FIBRE CEMENT PANEL SIDING, SMOOTH FINISH, IN WHITE
- 8 FIBRE CEMENT PANEL SIDING, SMOOTH FINISH, IN LIGHT GRAY
- 9 FIBRE CEMENT PANEL SIDING, SMOOTH FINISH, IN DARK GRAY
- 10 VINYL DECKING, LIGHT GREY TONES
- 11 FASCIA-MOUNTED ALUMINIUM GUARDRAIL AND RAILING, POWDER COATED, BLACK, WITH CLEAR GLASS INFILL VISION PANELS
- 12 COLUMNS, COLOUR TO MATCH DARK GREY
- 13 LOW SLOPED MEMBRANE DECK, IN DARK GREY TONES,
- 14 ALUMINIUM CURTAINWALL SYSTEM, IN BLACK
- 15 ALUMINIUM STOREFRONT GLAZING, IN BLACK
- 16 ALUMINIUM STOREFRONT DOORS, IN BLACK
- 17 VINYL SWING GLASS DOOR, IN BLACK
- 18 VINYL WINDOWS, IN BLACK
- 19 CONCRETE WALL, SACK FINISHED, PAINT SEALED
- 20 LOW SLOPED MEMBRANE ROOF, IN DARK GREY TONES, WITH PARAPET AND CAP FLASHING
- 21 FASCIA: FIBRE CEMENT PANEL SIDING, WITH ALUMINIUM CAP FLASHING COLOUR TO MATCH FASCIA.
- 22 SIGNAGE
- 23 PLANTERS, REFER TO LANDSCAPE ARCHITECT PACKAGE
- 24 ELEVATOR OVER-RUN
- 25 MECHANICAL ROOM
- 26 PARKADE OVERHEAD DOOR, PICKET STYLE, IN BLACK
- 27 STEEL DOOR, IN BLACK

\* NOTE: FLASHING TO COLOUR MATCH MATERIALS

\* NOTE: ILLUSTRATED BUILDING SIGNAGE IS PLACEHOLDER AND IS TO BE CONFIRMED IN A SEPARATE SIGNAGE APPLICATION TO MEET CITY OF NANAIMO SIGNAGE REQUIREMENTS

**RECEIVED**  
**DP1355**  
**2024-SEP-09**  
Current Planning

Rev	Date	Description	Site Plan.vwx
1	24-09-04	ISSUED FOR DP	
drawn by	24-05-23	drawing file	Site Plan.vwx
drawn by	DRS	checked by	GTH
scale	1:500	project number	2406

**5730 TURNER**  
5730 Turner Road  
Nanaimo, BC  
North and West  
Elevations - Residential



dHka Architects  
Victoria  
977 Fort Street V8V 3K3 T 1 • 250 • 658 • 3367  
Nanaimo  
102-5190 Dublin Way V9T 2K8 T 1 • 250 • 585 • 5810  
COPYRIGHT RESERVED. THESE PLANS AND DESIGNS ARE AND AT ALL TIMES REMAIN THE PROPERTY OF dHKA ARCHITECTS TO BE USED FOR THE PROJECT SHOWN AND MAY NOT BE REPRODUCED WITHOUT WRITTEN CONSENT.



1 South Elevations  
A302 Scale: 1:100



2 East Elevations  
A302 Scale: 1:100

### MATERIAL PALETTE

1 VERTICAL BOARD AND BATTEN CEMENT PANEL SIDING DARK GREY	14 ALUMINIUM CURTAINWALL SYSTEM, IN BLACK
2 VERTICAL PLANK CEMENT PANEL SIDING LIGHT GREY	15 ALUMINIUM STOREFRONT GLAZING, IN BLACK
3 PERFORATED SOFFIT, IN DARK GREY	16 ALUMINIUM STOREFRONT DOORS, IN BLACK
4 PERFORATED SOFFIT WOOD-LOOK PLANK, IN DOUGLAS FIR	17 VINYL SWING GLASS DOOR, IN BLACK
5 WOOD-LOOK PLANK CLADDING, IN DOUGLAS FIR	18 VINYL WINDOWS, IN BLACK
6 FIBRE CEMENT PLANK LAP SIDING, WOOD GRAIN FINISH, IN DARK GREY	19 CONCRETE WALL, SACK FINISHED, PAINT SEALED
7 FIBRE CEMENT PANEL SIDING, SMOOTH FINISH, IN WHITE	20 LOW SLOPED MEMBRANE ROOF, IN DARK GREY TONES, WITH PARAPET AND CAP FLASHING
8 FIBRE CEMENT PANEL SIDING, SMOOTH FINISH, IN LIGHT GRAY	21 FASCIA: FIBRE CEMENT PANEL SIDING, WITH ALUMINIUM CAP FLASHING COLOUR TO MATCH FASCIA.
9 FIBRE CEMENT PANEL SIDING, SMOOTH FINISH, IN DARK GRAY	22 SIGNAGE
10 VINYL DECKING, LIGHT GREY TONES	23 PLANTERS, REFER TO LANDSCAPE ARCHITECT PACKAGE
11 FASCIA-MOUNTED ALUMINIUM GUARDRAIL AND RAILING, POWDER COATED, BLACK, WITH CLEAR GLASS INFILL VISION PANELS	24 ELEVATOR OVER-RUN
12 COLUMNS, COLOUR TO MATCH DARK GREY	25 MECHANICAL ROOM
13 LOW SLOPED MEMBRANE DECK, IN DARK GREY TONES.	26 PARKADE OVERHEAD DOOR, PICKET STYLE, IN BLACK
	27 STEEL DOOR, IN BLACK

\* NOTE: FLASHING TO COLOUR MATCH MATERIALS  
 \* NOTE: ILLUSTRATED BUILDING SIGNAGE IS PLACEHOLDER AND IS TO BE CONFIRMED IN A SEPARATE SIGNAGE APPLICATION TO MEET CITY OF NANAIMO SIGNAGE REQUIREMENTS

1	24-09-04	ISSUED FOR DP
Rev	Date	Description
plot date	24-09-04	drawing file Site Plan.vwx
drawn by	DRS	checked by GTH
scale	1:500	project number 2406

NOTE: All dimensions are shown in millimeters.

**5730 TURNER**  
 5730 Turner Road  
 Nanaimo, BC  
 South and East  
 Elevations - Residential

dHk Architects  
 Victoria  
 977 Fort Street V8V 3K3 T 1 • 250 • 658 • 3367  
 Nanaimo  
 102-5190 Dublin Way V9T 2K8 T 1 • 250 • 585 • 5810

REGISTERED ARCHITECT  
 GLENN HILL  
 2024-09-04  
 GTH  
 BRITISH COLUMBIA

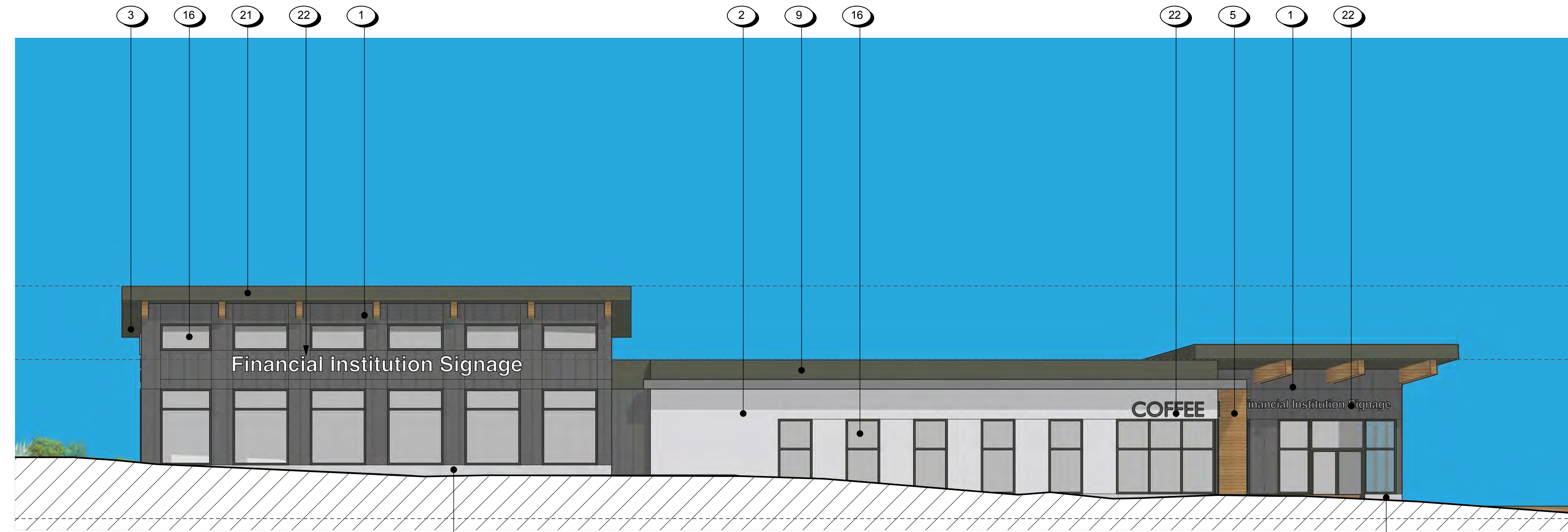
A302

dhKa

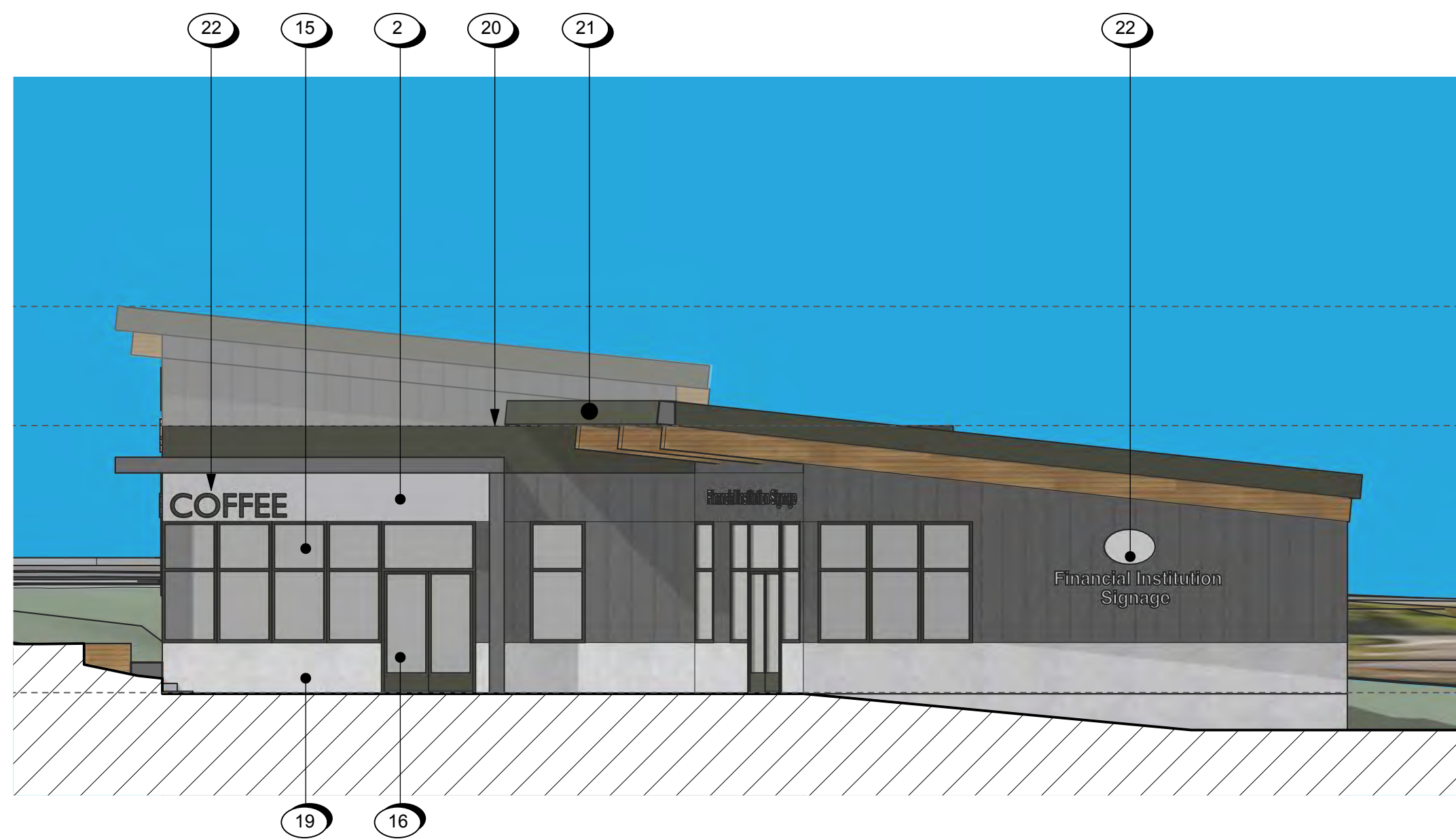
COPYRIGHT RESERVED. THESE PLANS AND DESIGNS ARE AND AT ALL TIMES REMAIN THE PROPERTY OF dHk ARCHITECTS TO BE USED FOR THE PROJECT SHOWN AND MAY NOT BE REPRODUCED WITHOUT WRITTEN CONSENT.



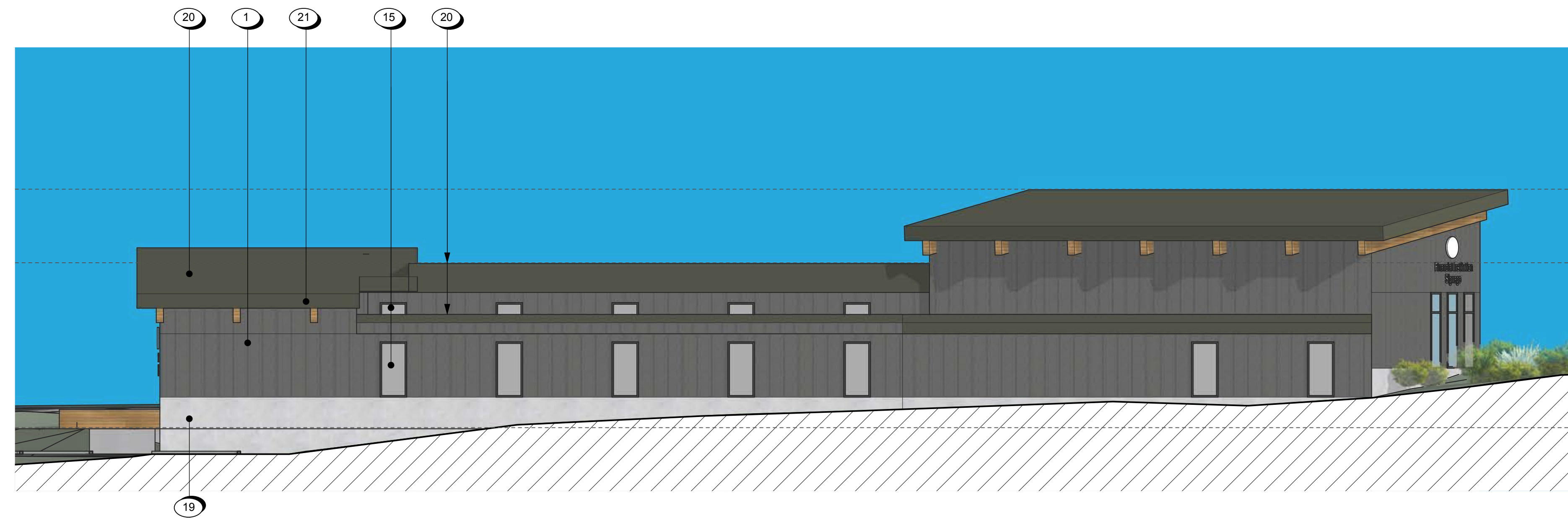
1 West Elevation  
A303 Scale: 1:100



2 South Elevation  
A303 Scale: 1:100



3 East Elevation  
A303 Scale: 1:100



4 North Elevation  
A303 Scale: 1:100

**MATERIAL PALETTE**

- 1 VERTICAL BOARD AND BATTEN CEMENT PANEL SIDING DARK GREY
- 2 VERTICAL PLANK CEMENT PANEL SIDING LIGHT GREY
- 3 PERFORATED SOFFIT, IN DARK GREY
- 4 PERFORATED SOFFIT WOOD-LOOK PLANK, IN DOUGLAS FIR
- 5 WOOD-LOOK PLANK CLADDING, IN DOUGLAS FIR
- 6 FIBRE CEMENT PLANK LAP SIDING, WOOD GRAIN FINISH, IN DARK GREY
- 7 FIBRE CEMENT PANEL SIDING, SMOOTH FINISH, IN WHITE
- 8 FIBRE CEMENT PANEL SIDING, SMOOTH FINISH, IN LIGHT GRAY
- 9 FIBRE CEMENT PANEL SIDING, SMOOTH FINISH, IN DARK GRAY
- 10 VINYL DECKING, LIGHT GREY TONES
- 11 FASCIA-MOUNTED ALUMINIUM GUARDRAIL AND RAILING, POWDER COATED, BLACK, WITH CLEAR GLASS INFILL VISION PANELS
- 12 COLUMNS, COLOUR TO MATCH DARK GREY
- 13 LOW SLOPED MEMBRANE DECK, IN DARK GREY TONES,
- 14 ALUMINIUM CURTAINWALL SYSTEM, IN BLACK
- 15 ALUMINIUM STOREFRONT GLAZING, IN BLACK
- 16 ALUMINIUM STOREFRONT DOORS, IN BLACK
- 17 VINYL SWING GLASS DOOR, IN BLACK
- 18 VINYL WINDOWS, IN BLACK
- 19 CONCRETE WALL, SACK FINISHED, PAINT SEALED
- 20 LOW SLOPED MEMBRANE ROOF, IN DARK GREY TONES, WITH PARAPET AND CAP FLASHING
- 21 FASCIA; FIBRE CEMENT PANEL SIDING, WITH ALUMINIUM CAP FLASHING COLOUR TO MATCH FASCIA.
- 22 SIGNAGE
- 23 PLANTERS, REFER TO LANDSCAPE ARCHITECT PACKAGE
- 24 ELEVATOR OVER-RUN
- 25 MECHANICAL ROOM
- 26 PARKADE OVERHEAD DOOR, PICKET STYLE, IN BLACK
- 27 STEEL DOOR, IN BLACK

\* NOTE: FLASHING TO COLOUR MATCH MATERIALS  
 \* NOTE: ILLUSTRATED BUILDING SIGNAGE IS PLACEHOLDER AND IS TO BE CONFIRMED IN A SEPARATE SIGNAGE APPLICATION TO MEET CITY OF NANAIMO SIGNAGE REQUIREMENTS

1	24-09-04	ISSUED FOR DP
Rev	Date	Description
plot date	24-05-23	drawing file Site Plan.vwx
drawn by	DRS	checked by GTH
scale	1:500	project number 2406

**5730 TURNER**  
 5730 Turner Road  
 Nanaimo, BC  
**Elevations - Commercial**

dHka **A303**

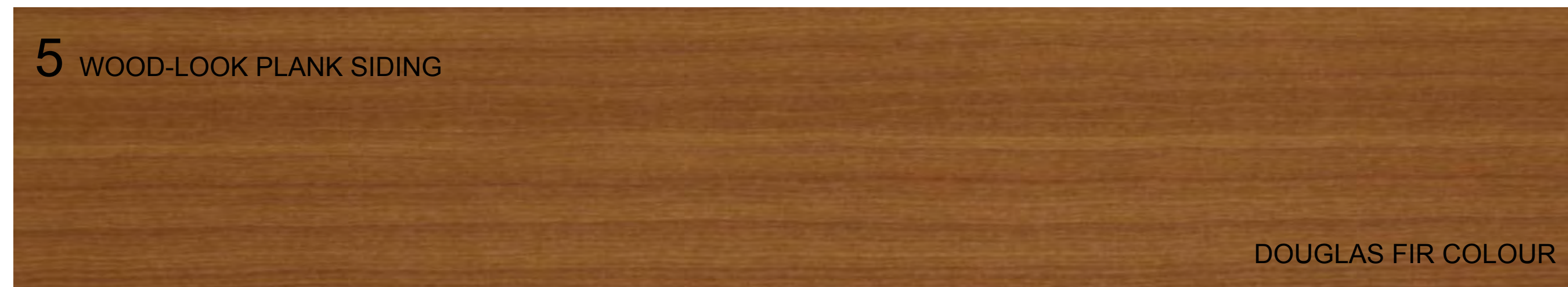
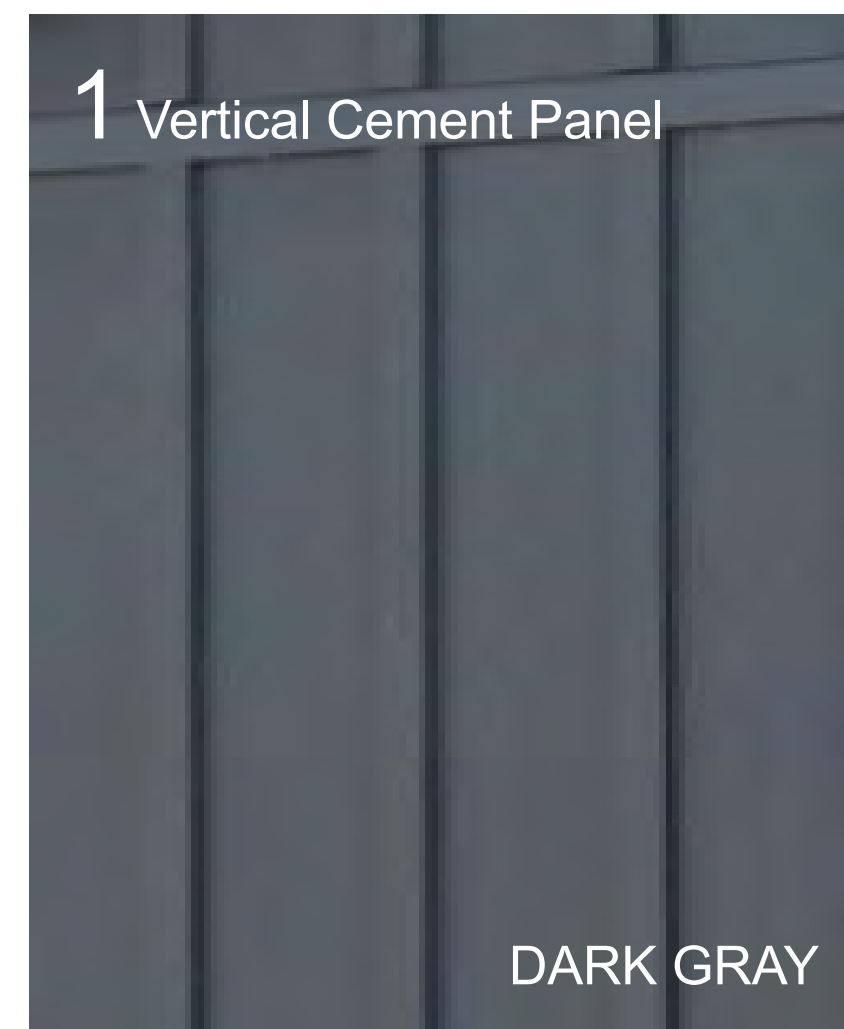
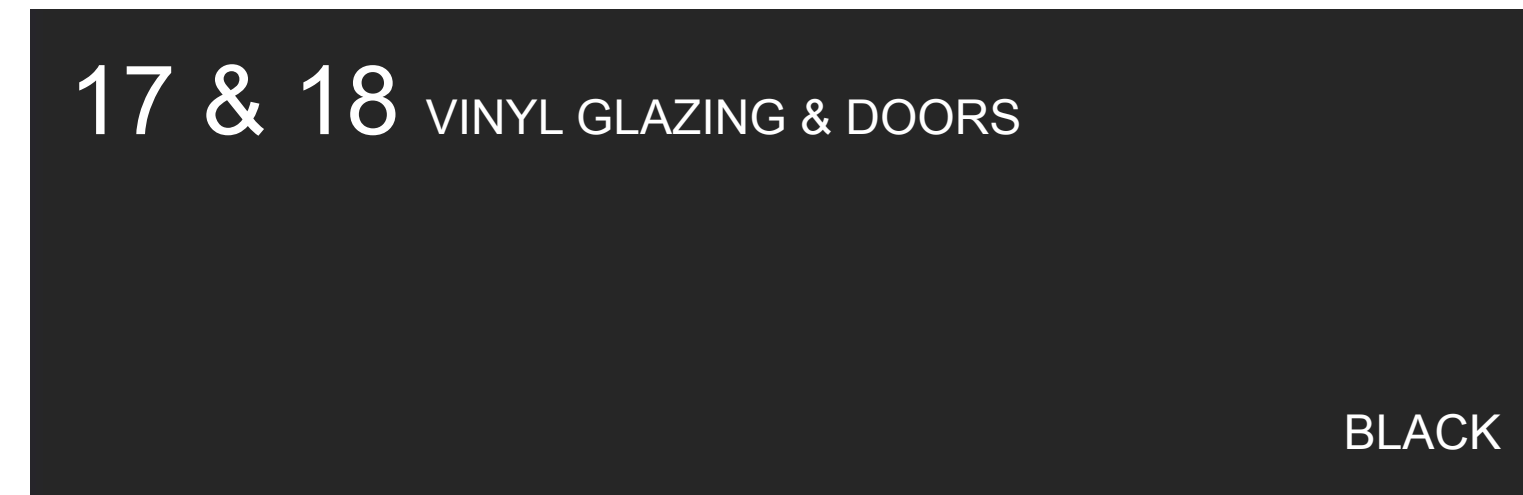
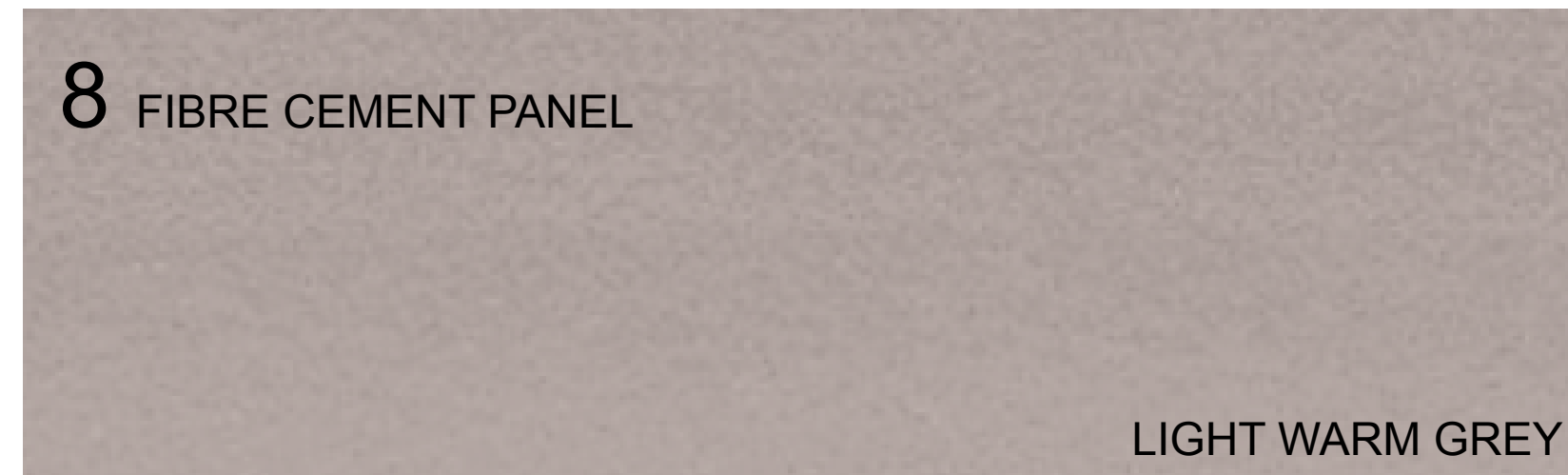
REGISTERED ARCHITECT  
 GLENN HILL  
 2024-09-04  
 BRITISH COLUMBIA

dHKArchitects  
 Victoria  
 977 Fort Street V8V 3K3 T 1-250-658-3367  
 Nanaimo  
 102-5190 Dublin Way V9T 2K8 T 1-250-585-5810  
 COPYRIGHT RESERVED. THESE PLANS AND DESIGNS ARE AND AT ALL TIMES REMAIN THE PROPERTY OF dHKARCHITECTS TO BE USED FOR THE PROJECT SHOWN AND MAY NOT BE REPRODUCED WITHOUT WRITTEN CONSENT.

**MATERIAL PALETTE**

- 1 VERTICAL BOARD AND BATTEN CEMENT PANEL SIDING DARK GREY
- 2 VERTICAL PLANK CEMENT PANEL SIDING LIGHT GREY
- 3 PERFORATED SOFFIT, IN DARK GREY
- 4 PERFORATED SOFFIT WOOD-LOOK PLANK, IN DOUGLAS FIR
- 5 WOOD-LOOK PLANK CLADDING, IN DOUGLAS FIR
- 6 FIBRE CEMENT PLANK LAP SIDING, WOOD GRAIN FINISH, IN DARK GREY
- 7 FIBRE CEMENT PANEL SIDING, SMOOTH FINISH, IN WHITE
- 8 FIBRE CEMENT PANEL SIDING, SMOOTH FINISH, IN LIGHT GRAY
- 9 FIBRE CEMENT PANEL SIDING, SMOOTH FINISH, IN DARK GRAY
- 10 VINYL DECKING, LIGHT GREY TONES
- 11 FASCIA-MOUNTED ALUMINIUM GUARDRAIL AND RAILING, POWDER COATED, BLACK, WITH CLEAR GLASS INFILL VISION PANELS
- 12 COLUMNS, COLOUR TO MATCH DARK GREY
- 13 LOW SLOPED MEMBRANE DECK, IN DARK GREY TONES,
- 14 ALUMINIUM CURTAINWALL SYSTEM, IN BLACK
- 15 ALUMINIUM STOREFRONT GLAZING, IN BLACK
- 16 ALUMINIUM STOREFRONT DOORS, IN BLACK
- 17 VINYL SWING GLASS DOOR, IN BLACK
- 18 VINYL WINDOWS, IN BLACK
- 19 CONCRETE WALL, SACK FINISHED, PAINT SEALED
- 20 LOW SLOPED MEMBRANE ROOF, IN DARK GREY TONES, WITH PARAPET AND CAP FLASHING
- 21 FASCIA: FIBRE CEMENT PANEL SIDING, WITH ALUMINIUM CAP FLASHING COLOUR TO MATCH FASCIA.
- 22 SIGNAGE
- 23 PLANTERS, REFER TO LANDSCAPE ARCHITECT PACKAGE
- 24 ELEVATOR OVER-RUN
- 25 MECHANICAL ROOM
- 26 PARKADE OVERHEAD DOOR, PICKET STYLE, IN BLACK
- 27 STEEL DOOR, IN BLACK

\* NOTE: FLASHING TO COLOUR MATCH MATERIALS  
 \* NOTE: ILLUSTRATED BUILDING SIGNAGE IS PLACEHOLDER AND IS TO BE CONFIRMED IN A SEPARATE SIGNAGE APPLICATION TO MEET CITY OF NANAIMO SIGNAGE REQUIREMENTS



1	24-09-04	ISSUED FOR DP
Rev	Date	Description
plot date	24-09-03	drawing file Site Plan.vwx
drawn by	DRS	checked by GTH
scale	1:500	project number 2406

NOTE: All dimensions are shown in millimeters.

**5730 TURNER**  
 5730 Turner Road  
 Nanaimo, BC  
**Material Board**

dHka A402

REGISTERED ARCHITECT  
 GLENN HILL  
 2024-09-04  
 BRITISH COLUMBIA

dHkarchitects  
 Victoria  
 977 Fort Street V8V 3K3 T 1-250-658-3367  
 Nanaimo  
 102-5190 Dublin Way V9T 2K8 T 1-250-585-5810

COPYRIGHT RESERVED. THESE PLANS AND DESIGNS ARE AND AT ALL TIMES REMAIN THE PROPERTY OF dHkARCHITECTS TO BE USED FOR THE PROJECT SHOWN AND MAY NOT BE REPRODUCED WITHOUT WRITTEN CONSENT.